

EASTERN OREGON UNIVERSITY

Anthropology/Sociology



Photo by Berenice Chavez, EOU anthropology major. Velebit Mountains, Croatia

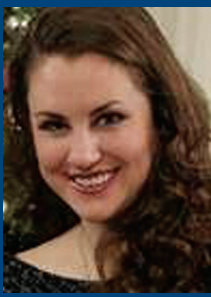
Anthropology

Explore the breadth of the human experience by studying human biological diversity, ancient civilizations, modern cultures and languages. Find success in international career opportunities, cross-cultural interactions or by pursuing research.

Study - Research - Grow

- > Cultivate an understanding of cross-cultural and intracultural perspectives as well as diversity as it relates to gender, social class, race ethnicity, sexual orientation, culture, etc.
- > Examine key issues affecting contemporary societies.
- > Build effective skills in critical thinking and discourse as well as in analytical and reflective writing.
- > Engage with faculty in small group settings and work on community-based research projects.

Flexible for your schedule! On campus
Anthropology concentration Online



"After leaving EOU, I completed my first archaeological field school before enrolling in a Master's degree. In 2006, I was accepted into the Ph.D. program at the University of Edinburgh. In 2013, I [became] the Director of the Office of the Native American Graves Protection and Repatriation Act at Indiana University. "

Dr. Jayne-Leigh Thomas, '04
Anthropology/Sociology - Anthropology
Selah, Wash.

IT'S EASY!
Your EOU application automatically includes you for scholarship opportunities.

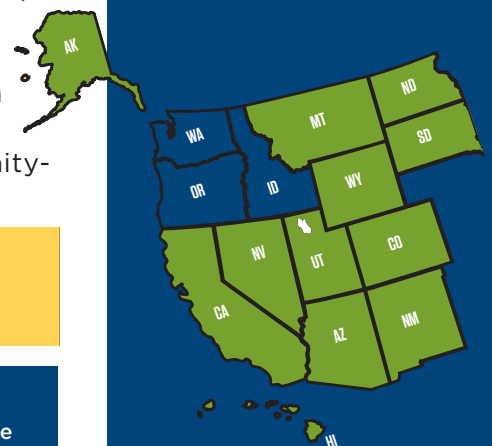
Apply NOW!

eou.edu/apply

Are you a WUE?
Find out!

eou.edu/admissions/wue

Oregon in-state tuition for ID and WA residents



Same great tuition online wherever you are!



Sociology/Social Welfare students organize 5k & 10k runs in order to bring the community together to help fund heating emergencies and raise money for donations towards Meals on Wheels.

Sociology/Social welfare

The sociology/social welfare concentration provides options that prepare students to pursue a graduate degree, or a professional career in social work. Put theory into practice while working in your community.

Flexible for your schedule!
Sociology/social welfare concentration

On campus
Online

Prepare for a career

What are EOU alumni doing?

- > Graduate programs
- > Archaeological research
- > Human services
- > Social welfare
- > Corrections and law enforcement
- > Forestry and natural resources
- > Community health
- > Government agencies
- > Higher education
- > Non-profit organizations



EOU provided me with the skills needed, not only in the realm of sociology and social welfare, but also with a well rounded approach toward collaborative communication, community building and mindfulness towards individuals and situations encountered.

Sheryl Roberts, '14
Anthropology/Sociology - Sociology
La Grande, Ore.

Start your application today!

WHAT WE NEED FROM YOU:

- Online application
- \$50 application fee
- Official college transcript(s)

Freshmen also submit:

- Official high school or GED transcript
- SAT/ACT scores

Contact us to learn more!

Apply NOW!

eou.edu/apply